



1-2002

MS-017: Mervin R. Hamsher Papers

Christine M. Ameduri

Follow this and additional works at: <https://cupola.gettysburg.edu/findingaidsall>

 Part of the [United States History Commons](#)

Share feedback about the accessibility of this item.

Ameduri, Christine M., "MS-017: Mervin R. Hamsher Papers" (January 2002). Special Collections and College Archives Finding Aids. Special Collection and College Archives, Musselman Library, Gettysburg College.

This finding aid appears in Gettysburg College's institutional repository by permission of the copyright owner for personal use, not for redistribution. Cupola permanent link: <https://cupola.gettysburg.edu/findingaidsall/17>

This open access book is brought to you by The Cupola: Scholarship at Gettysburg College. It has been accepted for inclusion by an authorized administrator of The Cupola. For more information, please contact cupola@gettysburg.edu.

MS-017: Mervin R. Hamsher Papers

Description

The Hamsher collection is divided into three series. Series I consists of personal correspondence between 1875 - 1969, from his father, Oliver C., sister, Elsie and brother Merle, his classmates from college and his classmate's children. It is the largest series in the collection. Series II consists of speeches, writings and papers Hamsher wrote while a student at Gettysburg College between 1902 and 1904. Series III is the smallest series, consisting of two folders of mostly miscellaneous, pamphlets, newsletters and church bulletins related to the Lutheran Church.

Special Collections and College Archives Finding Aids are discovery tools used to describe and provide access to our holdings. Finding aids include historical and biographical information about each collection in addition to inventories of their content. More information about our collections can be found on our website http://www.gettysburg.edu/special_collections/collections/.

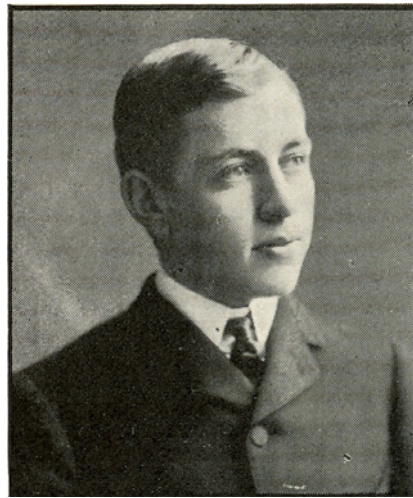
Keywords

Gettysburg College, Gettysburg Theological Seminary

Disciplines

History | United States History

**Guide to the
Mervin R. Hamsher Papers**



**Gettysburg College, Musselman Library
Special Collections & College Archives**

**Processed by Christine M. Ameduri
January 2002**

MS - 017: Mervin R. Hamsher Papers

*Processed by: Christine M. Ameduri
January 2002*

Biography:

Mervin Roy Hamsher, born October 3, 1882 near Fayetteville, Pennsylvania, entered Gettysburg College during his sophomore year and graduated with the Class of 1904. He taught Latin, algebra and literature at Richwood High School in Ohio from 1904 to 1905, then entered Gettysburg Theological Seminary in September of that year. Upon his graduation in 1908, he accepted the pastorate of Avonmore charge near Pittsburgh, PA, and served several other parishes in Pennsylvania and Maryland before retiring in 1954. He also served as the first president of the Central Pennsylvania Synod of the ULCA from 1938 to 1948.

He married Eleanor Wertz Miller (Class of 1907) in 1909 and had two sons, Carl M. (Class of 1933) and Paul O. (Class of 1934). Eleanor died February 2, 1920; he married Mildred Blanche Burkholder in June 1938. He died February 24, 1976.

Scope and Content Notes:

The Hamsher collection is divided into three series. Series I consists of personal correspondence between 1875 - 1969, from his father, Oliver C., sister, Elsie and brother Merle, his classmates from college and his classmate's children. It is the largest series in the collection. Series II consists of speeches, writings and papers Hamsher wrote while a student at Gettysburg College between 1902 and 1904. Series III is the smallest series, consisting of two folders of mostly miscellaneous, pamphlets, newsletters and church bulletins related to the Lutheran Church.

Box 1:

Series I - Correspondence

- 1 - 1** Personal correspondence, 1875 - 1877
- 1 - 2** Personal correspondence, 1883 - 1908
- 1 - 3** Personal correspondence, 1898 - 1907
- 1 - 4** Personal correspondence, 1908 - 1910
- 1 - 5** Personal correspondence, 1911 - 1922
- 1 - 6** Personal correspondence, 1936 - 1951
- 1 - 7** Personal correspondence, 1955 - 1969
- 1 - 8** Personal correspondence, n.d.

Series II - College speeches and writings

- 1 - 09** Speeches and writings (college)
- 1 - 10** Speeches and writings (college)
- 1 - 11** Speeches and writings (college)
- 1 - 12** Speeches and writings (college)

Series III - Miscellaneous

- 1 - 13** Miscellaneous - Pennsylvania College grade reports, wedding announcement, genealogy, newspaper clipping
- 1 - 14** Miscellaneous - newspaper clippings, pamphlets, newsletters, journals, mostly relating to Lutheran Church