

11-2013

MS-142: World War II Correspondence of Clarence and Helen Haldeman

Devin McKinney
Gettysburg College

Follow this and additional works at: <https://cupola.gettysburg.edu/findingaidsall>



Part of the [European History Commons](#), [Military History Commons](#), and the [United States History Commons](#)

Share feedback about the accessibility of this item.

McKinney, Devin, "MS-142: The World War II Correspondence of Clarence and Helen Haldeman" (November 2013). Special Collections and College Archives Finding Aids. Special Collection and College Archives, Musselman Library, Gettysburg College.

This finding aid appears in Gettysburg College's institutional repository by permission of the copyright owner for personal use, not for redistribution. Cupola permanent link: <https://cupola.gettysburg.edu/findingaidsall/125>

This open access finding aid is brought to you by The Cupola: Scholarship at Gettysburg College. It has been accepted for inclusion by an authorized administrator of The Cupola. For more information, please contact cupola@gettysburg.edu.

MS-142: World War II Correspondence of Clarence and Helen Haldeman

Description

The bulk of the letters in the collection were written by Clarence and Helen Haldeman between 1943 and 1946, while Clarence was being trained at various bases by the Army Air Corps, and later serving in a bomber squadron in the Pacific Theater of Operations during World War II.

Special Collections and College Archives Finding Aids are discovery tools used to describe and provide access to our holdings. Finding aids include historical and biographical information about each collection in addition to inventories of their content. More information about our collections can be found on our website

http://www.gettysburg.edu/special_collections/collections/.

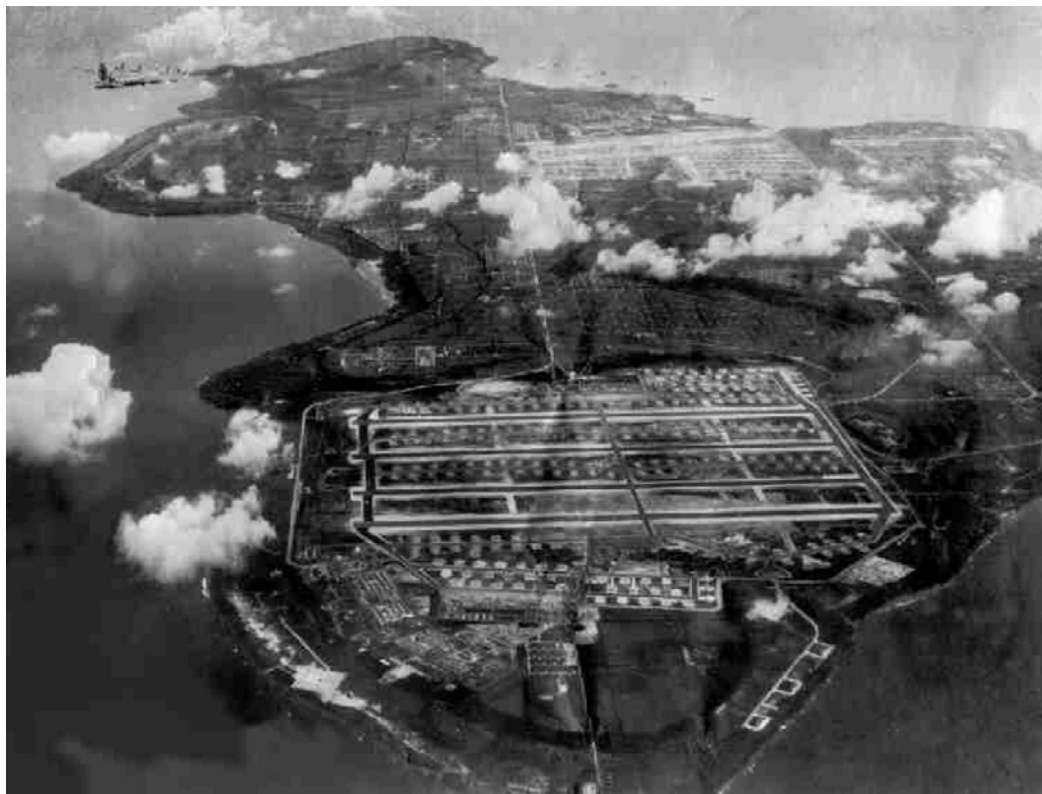
Keywords

World War II, WWII, Second World War, War Correspondence, Army Air Corps, 482nd Squadron, 505th Bomb Group, Tinian Airfield, Letterkenny Ordnance Depot, Pacific Theater of Operations

Disciplines

European History | History | Military History | United States History

**Guide to the World War II Correspondence of
Clarence and Helen Haldeman**



*Tinian Airfields, 1945.
(USAF Historical Research Agency)*

**Gettysburg College, Musselman Library
Special Collections & College Archives**

**Processed by Devin McKinney
November 2013**

Table of contents

Dates	1
Provenance	1
Collection size	1
Biographical note	1
Scope and content note	2
Access restrictions	3
Series Descriptions	4
Box & Folder List	5

MS – 142: The World War II Correspondence of Clarence and Helen Haldeman

(2.3 cubic feet, 8 boxes)

*Processed by Devin McKinney
December 2012 – November 2013*

Dates

Inclusive: 1943 - 1947

Bulk: 1944 - 1946

Provenance

Gift acquired from Charles Apfelbaum Rare Manuscripts and Archives, 2003.

Collection size

The collection consists of 8 boxes containing 52 folders. The folders contain 1,261 letters; 11 photographs or photographic negatives; six telegrams; one postcard; one greeting card; a number of newspaper clippings; and several miscellaneous artifacts and pieces of ephemera.

Biographical note

Clarence Leight Haldeman was born in Chambersburg, Pennsylvania, on September 30, 1917, to George and Lilly Haldeman. He had an older sister, Pearl, and a younger brother, Paul. His future wife, Helen Humelsine, was born January 9, 1920, in Greenvillage, Pennsylvania. She and Clarence were married on January 24, 1942.

Clarence enlisted as a private in the United States Army Air Corps on December 23, 1943, in New Cumberland, Pennsylvania. Following basic training, he attended flight-group training school in Miami Beach, Florida, and was thereafter stationed briefly at air bases in Salt Lake City, Utah; Dalhart, Texas; and Harvard, Nebraska.

His ultimate assignment was to the 482nd Squadron of the 505th Bomb Group. Stationed on Tinian in the Mariana Islands, Clarence was a mechanic in ground crews servicing the B-29s then conducting air raids over Japan (including the attacks on Tokyo in March-April 1945). In this post he became a crew chief, attained the rank of sergeant, and earned several commendations including a Good Conduct Medal, Bronze Star, and Bronze Service Star.

Helen spent the early part of the war clerking at the Letterkenny Ordnance Depot, a major U.S. Army supply site just northeast of Chambersburg. In the late summer of 1944, she joined Clarence at his Harvard, Nebraska, posting; for approximately four

months, they kept house in the nearby town of Clay Center. (This accounts for the gap in their letters during this period.)

When Clarence was shipped overseas, Helen returned to Chambersburg. The Haldemans resumed their lives there upon his return in early 1946. There they had two sons, Craig and Chris.

Clarence died on September 2, 1997, at the age of 79. Helen died on April 8, 2002, age 82. Both passed away in Chambersburg, and are buried in Lincoln Cemetery.

Scope and content note

The bulk of the letters in the collection were written by Clarence and Helen Haldeman between 1943 and 1946, while Clarence was being trained at various bases by the Army Air Corps, and later serving in a bomber squadron in the Pacific Theater of Operations.

The chief strength of the collection is its size. The Haldemans must be one of the few couples who, upon the husband's departure for war, promised to write each other every day and, within the limits of their ability, kept the promise. Clarence produces a letter, and often two, nearly every day for the first several months of his training, the sequence broken only by intervals of travel and reassignment. To fill his pages, he records the details of life on his various bases, including routine guard and KP duties, drills, examinations, off-duty amusements, barracks bull sessions, civilian populations, and geographical and cultural characteristics of the towns and cities where he is stationed.

Early on, Clarence chastises Helen for falling behind in her letter-writing, but soon she catches up, and the total number of letters written by each is almost identical. Helen writes about her daily routines, domestic affairs, interactions with relatives and friends, and gossip relating to common acquaintances. She also writes about her physical and emotional difficulties.

The Haldemans' epistolary voices are unique, candid, and often entertaining. Clarence's letters in particular are rich with humorous, sometimes profane observations of military life. That he often makes racist or anti-Semitic remarks is troubling to the contemporary reader, yet important to the social-historical context of the collection. (Helen, for her part, also makes such remarks.) Many letters contain sexual references of greater or lesser explicitness. A persistent theme in the couple's correspondence is each person's doubt about the other's faithfulness, and many passages evidence the stress caused by long separation.

All of Helen's letters are handwritten, as are Clarence's (with a single typed exception). Handwriting is quite legible, and the letters were preserved with great care. Most are clipped to their original envelopes, and a number include newspaper clippings, cartoons, church programs, and other ephemera. Of special interest to military and postal historians are those letters sent in the form of V-mail.¹ There are also several Western

¹ "V, or Victory mail, was a valuable tool for the military during World War II. . . . The letter-sheets were constructed and gummed so as to fold into a uniform and distinctively marked envelope. The user wrote the message in the limited space provided, added the name and address of the recipient, folded the form, affixed postage, if necessary, and mailed the letter. V-mail correspondence was then reduced to thumb-nail size on microfilm. The rolls of film were sent to prescribed destinations for developing at a receiving station near the addressee. Finally, individual facsimiles of the letter-sheets were reproduced about one-

Union telegrams in the collection.

Augmenting the correspondence of husband and wife are many letters written by members of Clarence's family, and others by friends or acquaintances of the couple. Those addressed to Clarence express appreciation of his sacrifice, and impart information about mutual friends, workplaces, and subjects of interest on the home front. The letters to Clarence from his younger brother Paul, also in the Army, offer a comparison of notes on military experience.

Also notable are the several authentic and unusual wartime artifacts contained in the letters. These include identifying plates recovered from Japanese aircraft; a strip of cloth with Japanese characters; examples of Japanese and Indian currency; and pieces of military ephemera.

quarter the original size and the miniature mail was then delivered to the addressee" (National Postal Museum website, http://www.postalmuseum.si.edu/exhibits/2d2a_vmail.html).

SERIES DESCRIPTIONS

I. Correspondence to Helen Haldeman from Clarence Haldeman, 1943-1946

This series—comprising 575 letters, one postcard, and four telegrams—consists of those items written by Clarence Haldeman and addressed to his wife, Helen.

II. Correspondence to Clarence Haldeman from Helen Haldeman, 1944-1946

In this series are those items—574 letters, one greeting card, and two telegrams—written and sent by Helen Haldeman to her husband, Clarence.

III. Correspondence to Clarence Haldeman from Paul Haldeman, 1944

This series contains letters written to Clarence Haldeman by his younger brother, Paul, also in the army at the time. There are 23 letters in this series.

IV. Correspondence to Clarence Haldeman from George and Lilly Haldeman, 1944

This series of 50 items contains the letters written and sent to Clarence Haldeman by his parents.

V. Correspondence to Clarence and Helen Haldeman from Pearl Haldeman, 1944

In this series are 15 letters written and sent to Clarence Haldeman by his older sister, Pearl, and one letter to Clarence from Pearl's daughter, Nancy Lee.

VI. Correspondence to Clarence and Helen Haldeman from Other Relatives, 1944-1947

This series contains letters from other members of Clarence's family. There are 7 letters in this series.

VII. Correspondence to Clarence and Helen Haldeman from Friends, 1941-1945

In this series are those notes written to Clarence and/or Helen Haldeman by friends during the war years. There are 13 letters in this series.

VIII. Miscellaneous Items

This series contains three items: a self-recorded vinyl disc made by Clarence and sent to Helen during his posting in Miami Beach (a digital version of which may be heard upon request); a compact disc containing the digitized audio of the recording; and a transcription of the recording.

BOX & FOLDER LIST

Note: “CH” refers to Clarence Haldeman, “HH” to Helen Haldeman.

Box 1

Series I. Correspondence to HH from CH, 1943-1946

Folder 1: Subseries A — December 1943

3 letters, 1 postcard

- December 23, 1943 (*postcard*)
- December 29, 1943
- December 30, 1943
- December 31, 1943

Folder 2: Subseries B — January 1944

25 letters

- January 1, 1944
- January 2, 1944
- January 3, 1944
- January 4, 1944
- January 5, 1944
- January 6, 1944
- January 8, 1944
- January 9, 1944 (1)
- January 9, 1944 (2)
- January 10, 1944
- January 11, 1944
- January 12, 1944
- January 13, 1944
- January 14, 1944
- January 15, 1944
- January 16, 1944
- January 17, 1944
- January 18, 1944
- January 19, 1944
- January 20, 1944
- January 21, 1944
- January 22, 1944
- January 23, 1944
- January 24, 1944
- January 25, 1944

Folder 3: Subseries C — February 1944

30 letters

- February 1, 1944
- February 2, 1944
- February 3, 1944
- February 4, 1944
- February 5, 1944
- February 6, 1944
- February 7, 1944
- February 8, 1944
- February 9, 1944
- February 10, 1944
- February 11, 1944
- February 12, 1944
- February 13, 1944
- February 14, 1944
- February 15, 1944
- February 16, 1944
- February 17, 1944
- February 18, 1944 (1)
- February 18, 1944 (2)
- February 19, 1944
- February 20, 1944
- February 21, 1944
- February 22, 1944
- February 23, 1944
- February 24, 1944
- February 25, 1944
- February 26, 1944
- February 27, 1944
- February 28, 1944
- February 29, 1944

Folder 4: Subseries D — March 1944

16 letters, 1 telegram

- March 1, 1944
- March 2, 1944
- March 17, 1944
- March 19, 1944
- March 20, 1944
- March 21, 1944 (1)
- March 21, 1944 (1)
- March 21, 1944 (*telegram*)
- March 22, 1944 (1)
- March 22, 1944 (2)
- March 23, 1944
- March 24, 1944 (1)
- March 24, 1944 (2)

- March 25, 1944
- March 28, 1944
- March 30, 1944
- March 31, 1944

Folder 5: Subseries E — April 1944

32 letters

- April 1, 1944
- April 2, 1944
- April 3, 1944
- April 4, 1944
- April 5, 1944
- April 6, 1944
- April 7, 1944
- April 8, 1944
- April 9, 1944
- April 10, 1944 (1)
- April 10, 1944 (2)
- April 11, 1944
- April 12, 1944
- April 13, 1944
- April 14, 1944
- April 15, 1944
- April 16, 1944
- April 17, 1944
- April 18, 1944 (1)
- April 18, 1944 (2)
- April 19, 1944
- April 20, 1944
- April 21, 1944 (1)
- April 21, 1944 (2)
- April 23, 1944
- April 24, 1944
- April 25, 1944
- April 26, 1944
- April 27, 1944
- April 28, 1944
- April 29, 1944
- April 30, 1944

Folder 6: Subseries F — May 1944

32 letters, 2 telegrams

- May 1, 1944
- May 2, 1944 (1)
- May 2, 1944 (2)
- May 3, 1944 (1)

- May 3, 1944 (2)
- May 4, 1944
- May 5, 1944 (1)
- May 5, 1944 (2)
- May 5, 1944 (3)
- May 6, 1944
- May 7, 1944
- May 8, 1944
- May 9, 1944
- May 10, 1944
- May 11, 1944
- May 12, 1944
- May 13, 1944
- May 14, 1944
- May 15, 1944
- May 16, 1944 (*telegram*)
- May 16, 1944
- May 18, 1944
- May 19, 1944
- May 20, 1944 (1)
- May 20, 1944 (2)
- May 21, 1944
- May 22, 1944
- May 23, 1944 (*telegram*)
- May 23, 1944
- May 24, 1944
- May 26, 1944 (1)
- May 26, 1944 (2)
- May 27, 1944

Folder 7: Subseries G — October 1944

1 letter

- October 10, 1944

Box 2

Folder 8: Subseries H — November 1944

11 letters

- November 6, 1944
- November 9, 1944 (1)
- November 9, 1944 (2)
- November 11, 1944
- November 12, 1944
- November 15, 1944
- November 20, 1944 (*V-mail*)

- November 21, 1944 (*V-mail*)
- November 22, 1944 (*V-mail*)
- November 24, 1944
- November 29, 1944

Folder 9: Subseries I — December 1944

18 letters

- December 2, 1944
- December 7, 1944
- December 9, 1944 (*V-mail*)
- December 10, 1944
- December 11, 1944 (1)
- December 11, 1944 (2)
- December 12, 1944
- December 13, 1944
- December 14, 1944
- December 15, 1944 (1)
- December 15, 1944 (2)
- December 16, 1944
- December 17, 1944
- December 22, 1944
- December 28, 1944
- December 29, 1944
- December 30, 1944
- December 31, 1944

Folder 10: Subseries J — January 1945

32 letters, 1 artifact

- January 1, 1945
- January 2, 1945
- January 3, 1945
- January 4, 1945 (+ *metal plate from Japanese plane*)
- January 5, 1945
- January 6, 1945
- January 8, 1945
- January 9, 1945
- January 10, 1945
- January 11, 1945
- January 12, 1945
- January 13, 1945
- January 14, 1945
- January 15, 1945
- January 16, 1945
- January 17, 1945 (1)
- January 17, 1945 (2)
- January 18, 1945

- January 19, 1945
- January 20, 1945
- January 21, 1945
- January 22, 1945
- January 23, 1945 (1) (*V-mail*)
- January 23, 1945 (2)
- January 24, 1945
- January 25, 1945
- January 26, 1945
- January 27, 1945
- January 28, 1945
- January 29, 1945
- January 30, 1945
- January 31, 1945

Folder 11: Subseries K — February 1945

28 letters

- February 1, 1945
- February 2, 1945
- February 3, 1945
- February 4, 1945
- February 5, 1945
- February 6, 1945
- February 7, 1945
- February 8, 1945
- February 9, 1945
- February 10, 1945
- February 11, 1945
- February 12, 1945
- February 13, 1945
- February 14, 1945
- February 15, 1945
- February 16, 1945
- February 17, 1945
- February 18, 1945
- February 19, 1945 (1)
- February 19, 1945 (2)
- February 21, 1945
- February 22, 1945
- February 23, 1945
- February 24, 1945
- February 25, 1945
- February 27, 1945
- February 28, 1945

Folder 12: Subseries L — March 1945

31 letters

- March 1, 1945
- March 2, 1945
- March 3, 1945
- March 4, 1945
- March 5, 1945
- March 6, 1945
- March 7, 1945
- March 8, 1945
- March 9, 1945
- March 10, 1945
- March 11, 1945
- March 12, 1945 (*misdated April 12*)
- March 13, 1945
- March 14, 1945
- March 15, 1945
- March 16, 1945
- March 17, 1945
- March 18, 1945
- March 19, 1945
- March 20, 1945
- March 21, 1945
- March 22, 1945
- March 23, 1945
- March 24, 1945
- March 25, 1945
- March 26, 1945
- March 27, 1945
- March 28, 1945
- March 29, 1945
- March 30, 1945
- March 31, 1945

Folder 13: Subseries M — April 1945

30 letters, 6 photographs, 1 artifact

- April 1, 1945
- April 2, 1945
- April 3, 1945
- April 4, 1945
- April 5, 1945
- April 6, 1945
- April 7, 1945
- April 8, 1945
- April 9, 1945
- April 10, 1945
- April 11, 1945

- April 12, 1945
- April 13, 1945
- April 14, 1945
- April 15, 1945
- April 16, 1945
- April 17, 1945
- April 18, 1945
- April 19, 1945
- April 20, 1945
- April 21, 1945
- April 22, 1945
- April 23, 1945
- April 24, 1945
- April 25, 1945 (+ *1 photo*)
- April 26, 1945 (+ *1 photo*)
- April 27, 1945 (+ *1 photo*)
- April 28, 1945 (+ *1 photo*)
- April 29, 1945 (+ *1 photo*)
- April 30, 1945 (+ *1 photo and 1 metal plate from Japanese bomber*)

Box 3

Folder 14: Subseries N — May 1945

31 letters, 2 photographs, 1 negative

- May 1, 1945
- May 2, 1945
- May 3, 1945
- May 4, 1945
- May 5, 1945
- May 6, 1945
- May 7, 1945
- May 8, 1945
- May 9, 1945
- May 10, 1945
- May 11, 1945
- May 12, 1945
- May 13, 1945
- May 14, 1945
- May 15, 1945
- May 16, 1945
- May 17, 1945
- May 18, 1945
- May 19, 1945
- May 20, 1945
- May 21, 1945

- May 22, 1945 (+ *1 photo*)
- May 23, 1945
- May 24, 1945
- May 25, 1945
- May 26, 1945
- May 27, 1945
- May 28, 1945
- May 29, 1945 (1)
- May 29, 1945 (2) (+ *1 photo and 1 negative*)
- May 31, 1945

Folder 15: Subseries O — June 1945

30 letters, 1 negative

- June 1, 1945
- June 2, 1945
- June 3, 1945
- June 4, 1945
- June 5, 1945
- June 6, 1945
- June 7, 1945
- June 8, 1945
- June 9, 1945
- June 10, 1945
- June 11, 1945
- June 12, 1945
- June 13, 1945
- June 14, 1945 (+ *1 negative*)
- June 15, 1945
- June 16, 1945
- June 17, 1945
- June 18, 1945
- June 19, 1945
- June 20, 1945
- June 21, 1945
- June 22, 1945
- June 23, 1945
- June 24, 1945
- June 25, 1945
- June 26, 1945
- June 27, 1945
- June 28, 1945
- June 29, 1945
- June 30, 1945

Folder 16: Subseries P — July 1945

31 letters, 1 artifact, 1 negative

- July 1, 1945
- July 2, 1945
- July 3, 1945
- July 4, 1945
- July 5, 1945
- July 6, 1945
- July 7, 1945
- July 8, 1945
- July 9, 1945
- July 10, 1945
- July 11, 1945
- July 12, 1945
- July 13, 1945
- July 15, 1945
- July 16, 1945
- July 17, 1945
- July 18, 1945 (+ 1 negative)
- July 19, 1945
- July 20, 1945
- July 21, 1945 (+ 1 cloth with Japanese characters)
- July 22, 1945
- July 23, 1945
- July 24, 1945
- July 25, 1945
- July 26, 1945
- July 27, 1945
- July 28, 1945
- July 29, 1945
- July 30, 1945
- July 31, 1945

Folder 17: Subseries Q — August 1945

31 letters, 2 artifacts

- August 1, 1945 (+ 1 Japanese 50-yen bill)
- August 2, 1945 (+ 1 Indian 1-rupee bill)
- August 3, 1945
- August 5, 1945 (1)
- August 5, 1945 (2)
- August 6, 1945 (1) (*typewritten*)
- August 6, 1945 (2)
- August 8, 1945
- August 9, 1945
- August 10, 1945
- August 11, 1945
- August 12, 1945
- August 13, 1945

- August 14, 1945
- August 15, 1945
- August 16, 1945
- August 17, 1945
- August 18, 1945
- August 19, 1945
- August 20, 1945
- August 21, 1945
- August 22, 1945
- August 23, 1945
- August 24, 1945
- August 25, 1945
- August 26, 1945
- August 27, 1945
- August 28, 1945
- August 29, 1945
- August 30, 1945
- August 31, 1945

Folder 18: Subseries R — September 1945

31 letters

- September 1, 1945
- September 2, 1945 (1)
- September 2, 1945 (2)
- September 3, 1945
- September 4, 1945
- September 5, 1945
- September 5, 1945
- September 7, 1945
- September 8, 1945
- September 9, 1945
- September 11, 1945 (1)
- September 11, 1945 (2)
- September 12, 1945
- September 13, 1945
- September 14, 1945
- September 15, 1945
- September 16, 1945
- September 17, 1945
- September 18, 1945
- September 19, 1945
- September 20, 1945
- September 21, 1945
- September 22, 1945
- September 23, 1945
- September 24, 1945

- September 25, 1945
- September 26, 1945
- September 27, 1945
- September 28, 1945
- September 29, 1945
- September 30, 1945

Box 4

Folder 19: Subseries S — October 1945

30 letters

- October 1, 1945
- October 3, 1945
- October 4, 1945
- October 5, 1945
- October 6, 1945
- October 7, 1945
- October 8, 1945
- October 9, 1945
- October 10, 1945
- October 11, 1945
- October 12, 1945
- October 13, 1945
- October 14, 1945
- October 15, 1945
- October 16, 1945
- October 17, 1945
- October 18, 1945
- October 19, 1945
- October 20, 1945
- October 21, 1945
- October 22, 1945
- October 23, 1945
- October 24, 1945
- October 25, 1945
- October 26, 1945
- October 27, 1945
- October 28, 1945
- October 29, 1945
- October 30, 1945
- October 31, 1945

Folder 20: Subseries T — November 1945

31 letters

- November 1, 1945

- November 2, 1945
- November 3, 1945
- November 4, 1945
- November 5, 1945
- November 6, 1945
- November 7, 1945
- November 8, 1945
- November 9, 1945
- November 10, 1945
- November 11, 1945
- November 12, 1945
- November 13, 1945
- November 14, 1945
- November 15, 1945
- November 16, 1945
- November 17, 1945
- November 18, 1945
- November 19, 1945
- November 20, 1945
- November 21, 1945
- November 22, 1945 (1)
- November 22, 1945 (2)
- November 23, 1945
- November 24, 1945
- November 25, 1945
- November 26, 1945
- November 27, 1945
- November 28, 1945
- November 29, 1945
- November 30, 1945

Folder 21: Subseries U — December 1945

30 letters, 1 clipping, 1 ephemera

- December 1, 1945
- December 2, 1945
- December 3, 1945
- December 4, 1945
- December 5, 1945
- December 6, 1945
- December 7, 1945
- December 8, 1945
- December 9, 1945
- December 10, 1945
- December 11, 1945
- December 12, 1945
- December 13, 1945

- December 14, 1945
- December 16, 1945
- December 17, 1945
- December 18, 1945
- December 19, 1945
- December 20, 1945
- December 21, 1945
- December 22, 1945 (+ 1 *clipping*)
- December 23, 1945
- December 24, 1945
- December 25, 1945 (+ 1 *dinner menu*)
- December 26, 1945
- December 27, 1945
- December 28, 1945
- December 29, 1945
- December 30, 1945
- December 31, 1945

Folder 22: Subseries V — January 1946

31 letters, 2 photographs, 1 clipping, 1 ephemera

- January 1, 1946
- January 2, 1946
- January 3, 1946
- January 4, 1946
- January 5, 1946
- January 6, 1946
- January 7, 1946 (+ 1 *calendar card*)
- January 8, 1946
- January 9, 1946
- January 10, 1946
- January 11, 1946
- January 12, 1946
- January 13, 1946
- January 14, 1946
- January 15, 1946
- January 16, 1946
- January 18, 1946 (1)
- January 18, 1946 (2)
- January 19, 1946
- January 20, 1946
- January 21, 1946
- January 23, 1946
- January 24, 1946 (1) (+ 2 *photos*)
- January 24, 1946 (2)
- January 25, 1946
- January 26, 1946

- January 27, 1946
- January 28, 1946
- January 29, 1946
- January 30, 1946
- January 31, 1946 (+ 1 clipping)

Folder 23: Subseries W — February 1946

10 letters, 1 telegram

- February 1, 1946
- February 2, 1946
- February 3, 1946
- February 4, 1946
- February 5, 1946
- February 6, 1946
- February 7, 1946
- February 9, 1946 (1) (*envelope only*)
- February 9, 1946 (2)
- February 10, 1946
- February 16, 1946
- February 25, 1946 (*telegram*)

Box 5

Series II: Correspondence to CH from HH, 1944-1946

Folder 24: Subseries A — January 1944

21 letters, 3 clippings, 1 ephemera

- January 1, 1944 (+ 1 clipping)
- January 4, 1944
- January 5, 1944
- January 6, 1944
- January 7, 1944 (+ 1 clipping)
- January 8, 1944
- January 9, 1944
- January 10, 1944
- January 11, 1944
- January 12, 1944
- January 13, 1944
- January 14, 1944 (+ 1 clipping)
- January 15, 1944
- January 16, 1944 (+ 1 partial baby card)
- January 17, 1944
- January 18, 1944
- January 19, 1944 (1)
- January 19, 1944 (2)
- January 20, 1944

- January 21, 1944
- January 22, 1944

Folder 25: Subseries B — February 1944

29 letters, 14 clippings

- February 1, 1944
- February 3, 1944 (1)
- February 3, 1944 (2)
- February 4, 1944 (+ 1 clipping)
- February 5, 1944 (+ 1 clipping)
- February 6, 1944
- February 7, 1944
- February 8, 1944
- February 9, 1944
- February 10, 1944
- February 11, 1944
- February 12, 1944
- February 13, 1944
- February 14, 1944 (+ 3 clippings)
- February 15, 1944 (+ 1 clipping)
- February 16, 1944
- February 17, 1944 (+ 1 clipping)
- February 18, 1944
- February 19, 1944
- February 20, 1944
- February 21, 1944
- February 22, 1944 (+ 1 clipping)
- February 23, 1944 (+ 1 clipping)
- February 24, 1944 (+ 1 clipping)
- February 25, 1944 (+ 2 clippings)
- February 26, 1944
- February 27, 1944 (+ 2 clippings)
- February 28, 1944
- February 29, 1944

Folder 26: Subseries C — March 1944

11 letters, 4 clippings

- March 1, 1944
- March 2, 1944 (+ 3 clippings)
- March 3, 1944 (+ 2 clippings)
- March 4, 1944
- March 5, 1944
- March 17, 1944
- March 18, 1944
- March 19, 1944
- March 20, 1944

- March 21, 1944
- March 22, 1944 – April 1, 1944

Folder 27: Subseries D — April 1944

31 letters, 1 clipping, 1 ephemera

- April 2, 1944
- April 3, 1944
- April 4, 1944
- April 5, 1944 (1)
- April 5, 1944 (2) (+ 1 Easter card)
- April 6, 1944
- April 7, 1944
- April 8, 1944
- April 9, 1944
- April 10, 1944
- April 11, 1944
- April 12, 1944
- April 13, 1944
- April 14, 1944
- April 15, 1944
- April 16, 1944
- April 17, 1944
- April 18, 1944
- April 19, 1944 (+ 1 clipping)
- April 20, 1944
- April 21, 1944
- April 24, 1944 (1)
- April 24, 1944 (2)
- April 25, 1944
- April 26, 1944
- April 27, 1944
- April 28, 1944
- April 29, 1944
- April 30, 1944

Folder 28: Subseries E — May 1944

24 letters, 2 clippings

- May 1, 1944
- May 2, 1944
- May 3, 1944
- May 4, 1944
- May 5, 1944
- May 6, 1944
- May 7, 1944
- May 8, 1944 (+ 1 clipping)
- May 8, 1944

- May 9, 1944
- May 10, 1944
- May 11, 1944
- May 12, 1944
- May 13, 1944
- May 14, 1944
- May 15, 1944
- May 16, 1944
- May 22, 1944
- May 23, 1944
- May 24, 1944 (+ 1 clipping)
- May 25, 1944
- May 26, 1944
- May 27, 1944

Box 6

Folder 29: Subseries F — November 1944

23 letters

- November 8, 1944
- November 9, 1944
- November 10, 1944
- November 11, 1944
- November 12, 1944
- November 13, 1944
- November 14, 1944
- November 15, 1944
- November 16, 1944
- November 17, 1944
- November 18, 1944
- November 19, 1944
- November 20, 1944
- November 21, 1944
- November 22, 1944
- November 23, 1944
- November 24, 1944
- November 25, 1944
- November 26, 1944
- November 27, 1944
- November 28, 1944
- November 29, 1944
- November 30, 1944

Folder 30: Subseries G — December 1944

33 letters

- December 1, 1944
- December 2, 1944
- December 3, 1944
- December 4, 1944
- December 5, 1944
- December 6, 1944
- December 7, 1944
- December 8, 1944
- December 9, 1944
- December 10, 1944
- December 11, 1944
- December 12, 1944
- December 13, 1944
- December 14, 1944
- December 15, 1944
- December 16, 1944
- December 17, 1944
- December 18, 1944
- December 19, 1944
- December 20, 1944
- December 21, 1944 (1)
- December 21, 1944 (2)
- December 22, 1944 (1)
- December 22, 1944 (2)
- December 23, 1944
- December 24, 1944
- December 25, 1944
- December 26, 1944
- December 27, 1944
- December 28, 1944
- December 29, 1944
- December 30, 1944
- December 31, 1944

Folder 31: Subseries H — January 1945

31 letters

- January 1, 1945
- January 2, 1945
- January 3, 1945
- January 4, 1945
- January 5, 1945
- January 6, 1945
- January 7, 1945
- January 8, 1945
- January 9, 1945
- January 10, 1945

- January 11, 1945
- January 12, 1945
- January 13, 1945
- January 14, 1945
- January 15, 1945
- January 16, 1945
- January 17, 1945
- January 18, 1945
- January 19, 1945
- January 20, 1945
- January 21, 1945
- January 22, 1945 (1)
- January 22, 1945 (2)
- January 23, 1945
- January 24, 1945
- January 25, 1945
- January 27, 1945
- January 28, 1945
- January 29, 1945
- January 30, 1945
- January 31, 1945

Folder 32: Subseries I — February 1945

28 letters

- February 1, 1945
- February 2, 1945
- February 3, 1945
- February 4, 1945
- February 5, 1945
- February 6, 1945
- February 7, 1945
- February 8, 1945
- February 9, 1945
- February 10, 1945
- February 11, 1945
- February 12, 1945
- February 13, 1945
- February 14, 1945
- February 15, 1945
- February 16, 1945
- February 17, 1945
- February 18, 1945
- February 19, 1945
- February 20, 1945
- February 21, 1945
- February 22, 1945

- February 23, 1945
- February 24, 1945
- February 25, 1945
- February 26, 1945
- February 27, 1945
- February 28, 1945

Folder 33: Subseries J — March 1945

31 letters

- March 1, 1945
- March 2, 1945
- March 3, 1945
- March 4, 1945
- March 5, 1945
- March 6, 1945
- March 7, 1945
- March 8, 1945
- March 9, 1945
- March 10, 1945
- March 11, 1945
- March 12, 1945
- March 13, 1945
- March 14, 1945
- March 15, 1945
- March 16, 1945
- March 17, 1945
- March 18, 1945
- March 19, 1945
- March 20, 1945
- March 21, 1945
- March 22, 1945
- March 23, 1945
- March 24, 1945
- March 25, 1945
- March 26, 1945
- March 27, 1945
- March 28, 1945
- March 29, 1945
- March 30, 1945
- March 31, 1945

Folder 34: Subseries K — April 1945

30 letters

- April 1, 1945
- April 2, 1945
- April 3, 1945

- April 4, 1945
- April 5, 1945
- April 6, 1945
- April 7, 1945
- April 8, 1945
- April 9, 1945
- April 10, 1945
- April 11, 1945
- April 12, 1945
- April 13, 1945
- April 14, 1945
- April 15, 1945
- April 16, 1945
- April 17, 1945
- April 18, 1945
- April 19, 1945
- April 20, 1945
- April 21, 1945
- April 22, 1945
- April 23, 1945
- April 24, 1945
- April 25, 1945
- April 26, 1945
- April 27, 1945
- April 28, 1945
- April 29, 1945
- April 30, 1945

Folder 35: Subseries L — May 1945

31 letters

- May 1, 1945
- May 2, 1945
- May 3, 1945
- May 4, 1945
- May 5, 1945
- May 6, 1945
- May 7, 1945
- May 8, 1945
- May 9, 1945
- May 10, 1945
- May 11, 1945
- May 12, 1945
- May 13, 1945
- May 14, 1945
- May 15, 1945
- May 16, 1945

- May 17, 1945
- May 18, 1945
- May 19, 1945
- May 20, 1945
- May 21, 1945
- May 22, 1945
- May 23, 1945
- May 24, 1945
- May 25, 1945
- May 26, 1945
- May 27, 1945
- May 28, 1945
- May 29, 1945
- May 30, 1945
- May 31, 1945

Folder 36: Subseries M — Telegrams, c. May 1945

2 telegrams

- May 27, [1945?]
- May 29, [1945?]

Folder 37: Subseries N — June 1945

31 letters

- June 1, 1945
- June 2, 1945
- June 3, 1945
- June 4, 1945
- June 5, 1945
- June 6, 1945
- June 7, 1945
- June 8, 1945
- June 9, 1945
- June 10, 1945
- June 11, 1945
- June 12, 1945
- June 13, 1945
- June 14, 1945
- June 15, 1945
- June 16, 1945
- June 17, 1945
- June 18, 1945
- June 19, 1945
- June 20, 1945
- June 21, 1945
- June 22, 1945
- June 23, 1945

- June 24, 1945
- June 25, 1945
- June 26, 1945
- June 27, 1945
- June 28, 1945
- June 29, 1945
- June 30, 1945

Folder 38: Subseries O — July 1945

26 letters

- July 1, 1945
- July 2, 1945
- July 3, 1945
- July 4, 1945
- July 5, 1945
- July 6, 1945
- July 7, 1945
- July 8, 1945
- July 9, 1945
- July 10, 1945
- July 11, 1945
- July 12, 1945
- July 13, 1945
- July 14, 1945
- July 15, 1945
- July 16, 1945
- July 17, 1945
- July 18, 1945
- July 19, 1945
- July 20, 1945
- July 21, 1945
- July 22, 1945
- July 23, 1945
- July 24, 1945
- July 25, 1945
- July 26, 1945

Box 7

Folder 39: Subseries P — August 1945

30 letters

- August 2, 1945
- August 3, 1945
- August 4, 1945
- August 5, 1945

- August 6, 1945
- August 7, 1945
- August 8, 1945
- August 9, 1945
- August 10, 1945
- August 11, 1945
- August 12, 1945
- August 13, 1945
- August 14, 1945
- August 15, 1945
- August 16, 1945
- August 17, 1945
- August 18, 1945
- August 19, 1945
- August 20, 1945
- August 21, 1945
- August 22, 1945
- August 23, 1945
- August 24, 1945
- August 25, 1945
- August 26, 1945
- August 27, 1945
- August 28, 1945
- August 29, 1945
- August 30, 1945
- August 31, 1945

Folder 40: Subseries Q — September 1945

30 letters

- September 1, 1945
- September 2, 1945
- September 3, 1945
- September 4, 1945
- September 5, 1945
- September 6, 1945
- September 7, 1945
- September 8, 1945
- September 9, 1945
- September 10, 1945
- September 11, 1945
- September 12, 1945
- September 13, 1945
- September 14, 1945
- September 15, 1945
- September 16, 1945
- September 17, 1945

- September 18, 1945
- September 19, 1945
- September 20, 1945
- September 21, 1945
- September 22, 1945
- September 23, 1945
- September 24, 1945
- September 25, 1945
- September 26, 1945
- September 27, 1945
- September 28, 1945
- September 29, 1945
- September 30, 1945

Folder 41: Subseries R — October 1945

31 letters

- October 1, 1945
- October 2, 1945
- October 3, 1945
- October 4, 1945
- October 5, 1945
- October 6, 1945
- October 7, 1945
- October 8, 1945
- October 9, 1945
- October 10, 1945
- October 11, 1945
- October 12, 1945
- October 13, 1945
- October 14, 1945
- October 15, 1945
- October 16, 1945
- October 17, 1945
- October 18, 1945
- October 19, 1945
- October 20, 1945
- October 21, 1945
- October 22, 1945
- October 23, 1945
- October 24, 1945
- October 25, 1945
- October 26, 1945
- October 27, 1945
- October 28, 1945
- October 30, 1945
- October 31, 1945

Folder 42: Subseries S — November 1945

30 letters

- November 1, 1945
- November 2, 1945
- November 3, 1945
- November 4, 1945
- November 5, 1945
- November 6, 1945
- November 7, 1945
- November 8, 1945
- November 9, 1945
- November 10, 1945
- November 11, 1945
- November 12, 1945
- November 13, 1945
- November 14, 1945
- November 15, 1945
- November 16, 1945
- November 17, 1945
- November 18, 1945
- November 19, 1945
- November 20, 1945
- November 21, 1945
- November 22, 1945
- November 23, 1945
- November 24, 1945
- November 25, 1945
- November 26, 1945
- November 27, 1945
- November 28, 1945
- November 29, 1945
- November 30, 1945

Folder 43: Subseries T — December 1945

31 letters

- December 1, 1945
- December 2, 1945
- December 3, 1945
- December 4, 1945
- December 5, 1945
- December 6, 1945
- December 7, 1945
- December 8, 1945
- December 9, 1945
- December 10, 1945

- December 11, 1945
- December 12, 1945
- December 13, 1945
- December 14, 1945
- December 15, 1945
- December 16, 1945
- December 17, 1945
- December 18, 1945
- December 19, 1945
- December 20, 1945
- December 21, 1945
- December 22, 1945
- December 23, 1945
- December 24, 1945
- December 25, 1945
- December 26, 1945
- December 27, 1945
- December 28, 1945
- December 29, 1945
- December 30, 1945
- December 31, 1945

Folder 44: Subseries U — January 1946

29 letters

- January 1, 1946
- January 3, 1946
- January 4, 1946
- January 5, 1946
- January 6, 1946
- January 7, 1946
- January 8, 1946
- January 9, 1946
- January 10, 1946
- January 11, 1946
- January 12, 1946
- January 13, 1946
- January 14, 1946
- January 15, 1946
- January 16, 1946
- January 17, 1946
- January 18, 1946
- January 19, 1946
- January 20, 1946
- January 21, 1946
- January 22, 1946
- January 23, 1946

- January 24, 1946
- January 25, 1946
- January 25, 1946
- January 28, 1946
- January 29, 1946
- January 30, 1946
- January 31, 1946

Folder 45: Subseries V — February 1946

15 letters

- February 1, 1946
- February 3, 1946
- February 4, 1946
- February 5, 1946
- February 6, 1946
- February 7, 1946
- February 8, 1946
- February 9, 1946
- February 10, 1946
- February 11, 1946
- February 12, 1946
- February 13, 1946
- February 14, 1946
- February 15, 1946

Series III: Correspondence to CH from Paul Haldeman, 1944

Folder 46

23 letters

- January 4, 1944
- January 10, 1944
- January 21, 1944
- January 30, 1944
- February 20, 1944
- February 27, 1944
- April 4, 1944
- April 12, 1944
- April 20, 1944
- April 26, 1944
- May 6, 1944
- May 21, 1944
- June 4, 1944
- June 19, 1944
- June 25, 1944
- July 8, 1944
- July 22, 1944 (*V-mail*)

- August 6, 1944
- August 10, 1944
- September 3, 1944
- September 7, 1944 (*V-mail*)
- September 25, 1944
- September 26, 1944 (*V-mail*)
- October 6, 1944 (*V-mail*)
- October 10, 1944 (*V-mail*)

Series IV: Correspondence to CH from George and Lilly Haldeman, 1944

Folder 47: Subseries A — January-May 1944

24 letters

- January 5, 1944
- January 8, 1944
- January 13, 1944
- January 18, 1944
- January 23, 1944
- January 28, 1944
- February 2, 1944
- February 7, 1944
- February 14, 1944
- February 22, 1944
- February 25, 1944
- March 2, 1944
- March 10, 1944
- April 3, 1944
- April 9, 1944
- April 17, 1944
- April 23, 1944
- April 27, 1944
- May 1, 1944
- May 5, 1944
- May 15, 1944
- May 18, 1944
- May 24, 1944
- May 28, 1944

Folder 48: Subseries B — June-October 1944

26 letters

- June 5, 1944
- June 11, 1944
- June 15, 1944
- June 21, 1944
- June 26, 1944
- June 26, 1944 (+ *letter from nephew Albert*)

- July 3, 1944
- July 12, 1944
- July 19, 1944
- July 24, 1944
- July 30, 1944
- August 6, 1944
- August 13, 1944
- August 24, 1944
- August 30, 1944
- September 1, 1944
- September 6, 1944
- September 10, 1944
- September 13, 1944
- September 18, 1944
- September 26, 1944
- October 1, 1944
- October 10, 1944
- October 17, 1944
- October 22, 1944
- October 30, 1944

Series V: Correspondence to CH and HH from Pearl Haldeman, 1944

Folder 49

16 letters

- January 11, 1944
- January 21, 1944
- February 7, 1944
- February 23, 1944
- April 5, 1944
- April 14, 1944
- April 25, 1944
- May 1, 1944
- May 7, 1944
- May 22, 1944
- June 7, 1944
- June 13, 1944
- June 23, 1944 (+ *note from niece Nancy Lee*)
- July 28, 1944
- August 7, 1944
- September 15, 1944

Series VI: Correspondence to CH and HH from Other Relatives, 1944-1947

Folder 50

7 letters

- January 12, 1944, from CH's grandmother
- January 25, 1944, from CH's nephew Albert
- April 5, 1944, from CH's Aunt Tommy
- April 13, 1944, from CH's Aunt Tommy
- May 8, 1944, from CH's Aunt Tommy
- August 6, 1944, from CH's Aunt Tommy
- May 21, 1947, from CH's Aunt Tommy (signed "Gloria, Robert & Tommy")

Series VII: Correspondence to CH and HH from Friends, 1941-1945

Folder 51

13 letters, 2 envelopes

- October 5, 1941, postmarked envelope from Mrs. J. Gierri Hayden (Gertrude D. Hayden, aka "Snook")
- February 26, 1942, postmarked envelope from Mrs. Hayden
- January 16, 1944, from Mrs. Maurice Manahan (Susan Flohrs Manahan)
- January 16, 1944, from Red
- January 27, 1944, from Lemasters (Chauncey Ives Lemaster, Sr.)
- February 2, 1944, from Harry
- February 6, 1944, from Mrs. Manahan
- February 14, 1944, from Imy
- February 23, 1944, from Marjorie McFadden
- April 2, 1944, from Mearl (Shockey)
- April 6, 1944, from Ruth Zeger
- April 16, 1944, from Ben
- June 18, 1944, from Mrs. Manahan
- September 3, 1944, from Bernice Diehl
- May 15, 1945, postmarked envelope and letter from Mrs. Hayden

Series VIII: Miscellaneous Items

Folder 52

1 disc, 1 compact disc, 1 document

- Vinyl disc recorded by CH, Miami Beach, FL, c. January 1944, in original sleeve
- Compact disc containing digitized audio of recording
- Transcription of recording